

## Installing Diver USB reading device under Windows 2000

This note assumes that you are installing the drivers on to a clean system, i.e. one which on which these drivers have not been installed previously. If this is not the case then refer to the appendix A for guidance on uninstalling these drivers before proceeding with installation.

***The installation under Win'98, Win ME and Win XP is almost the same.***

Plug in your device. This should bring up Found New Hardware Wizard.



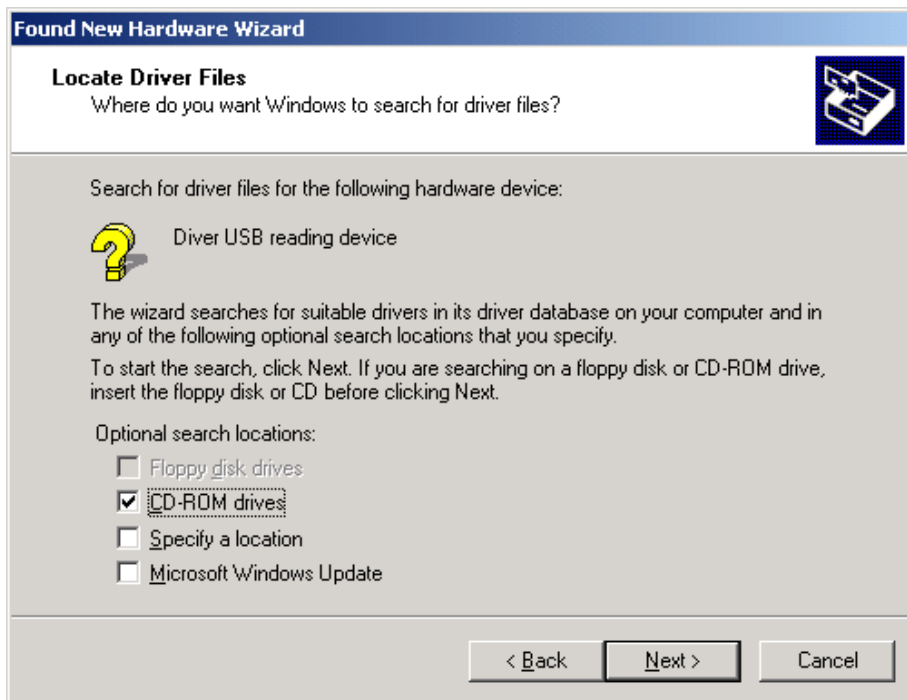
Screen 1

Select Next.



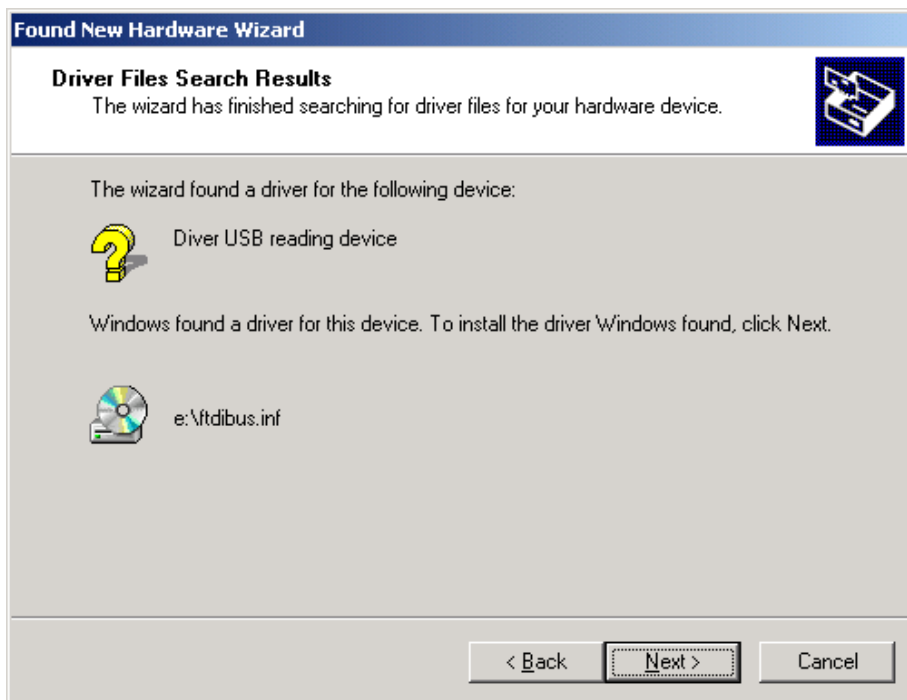
Screen 2

Select Next.



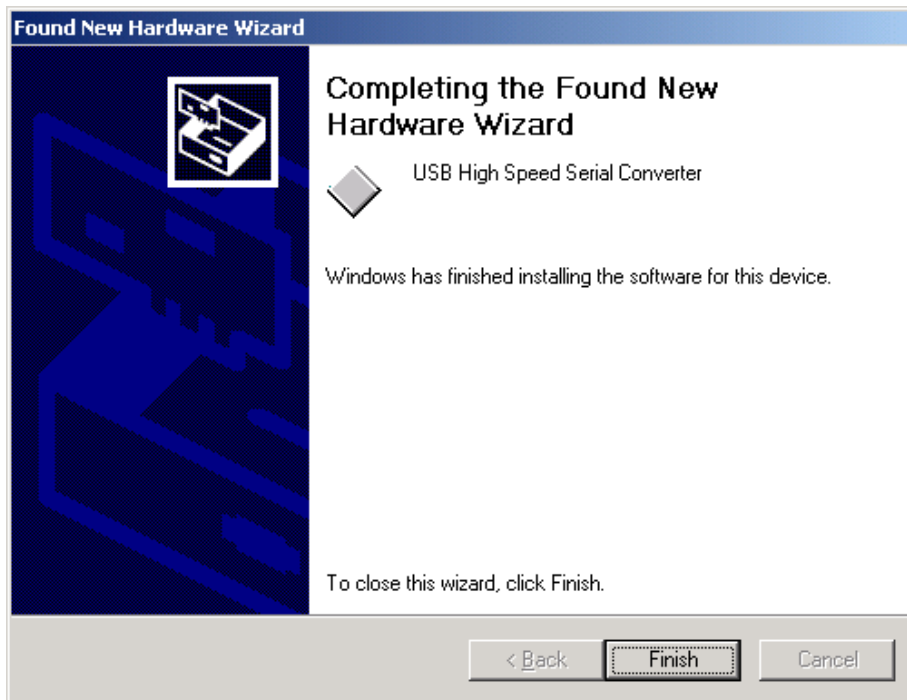
Screen 3

Select the optional search locations for the drivers. Select Next.



Screen 4

Select Next.



Screen 5

Select Finish.

This completes the first part of installation during which the USB to serial converter is installed. The second part involves the installation of a serial port. This should follow on automatically once the converter installation is complete.



Screen 6

Select Next.

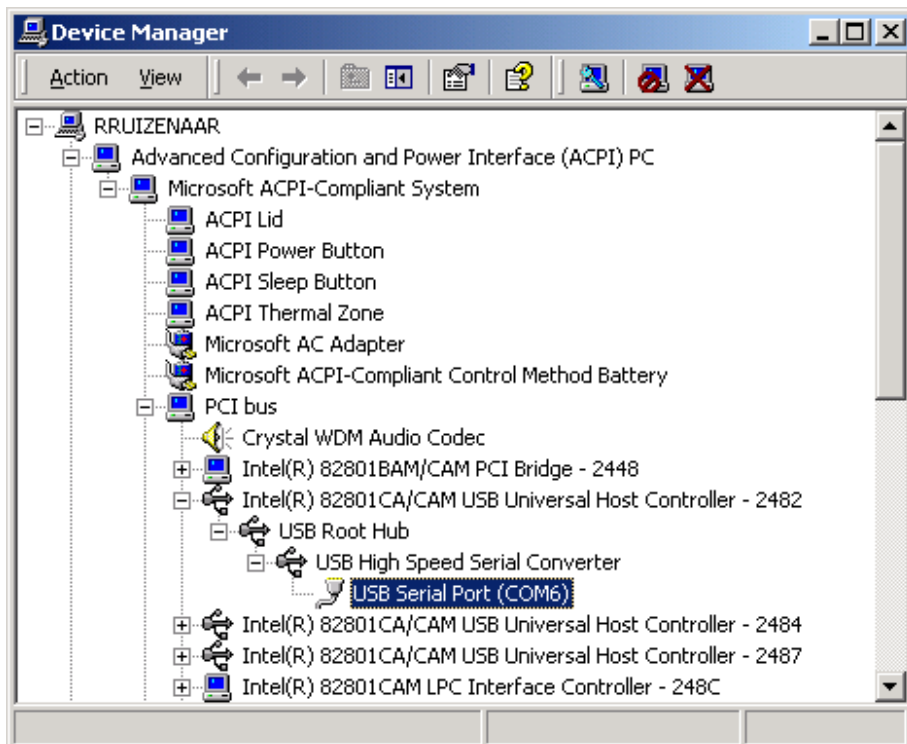


Screen 7

Follow the instructions to Finish (these are quit similar to the previous questions).

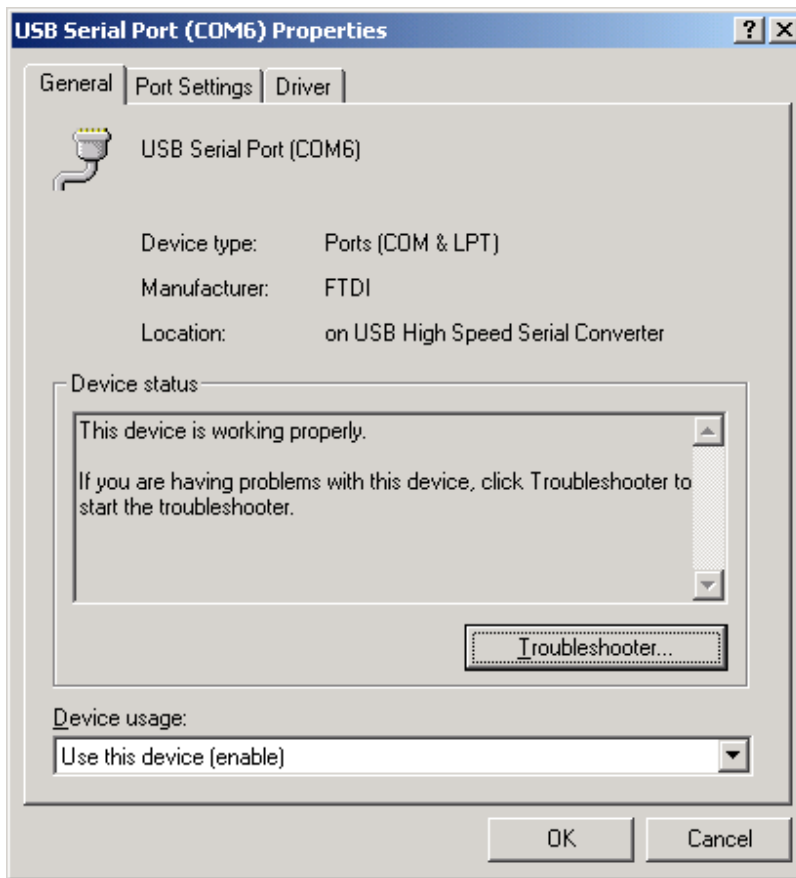
Once the installation of the serial port has completed confirm that the installation has been successful by looking under Device Manager of the System Properties screen. The device should have installed as a USB Serial Port (COMx) attached to USB High Speed Serial Converter.

The screen below is shown after selecting Control Panel -> System Properties -> Hardware -> Device Manager, then Select View -> Devices by connection.



Screen 8

To change the virtual COM port properties select the USB Serial Port and then Click Properties. This allows you to change serial port properties such as baud rate, data bits etc. Of particular use is the ability to change the COM port which is assigned to your device.

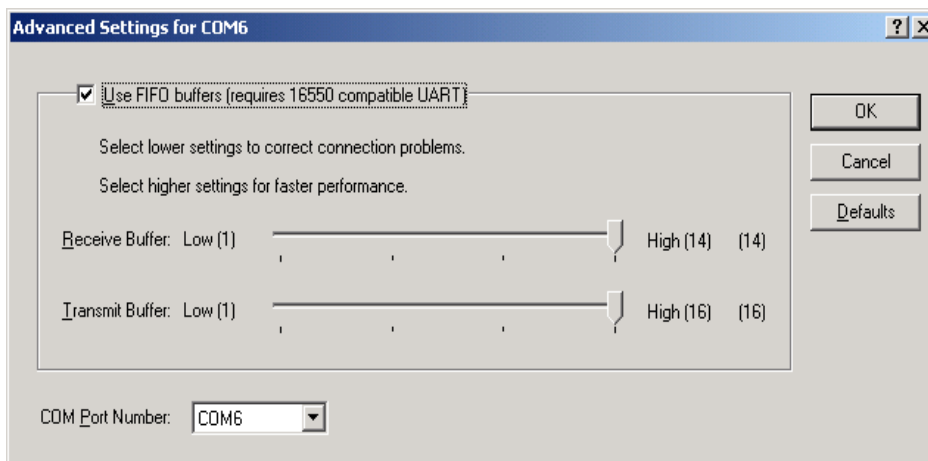


Screen 9

Select Port Settings followed by Advanced and then change the COM port by selecting the menu via the down arrow.

Click the drop down arrow on COM Port Number and scroll to the required COM port. Select OK. Please ensure that you do not select a COM port which is in use. Note this is particularly useful for programs which only work with COM1 through to COM4.

When you return to the Device Manager Screen you will have seen that the USB Serial Port installation has been changed to another COM port.

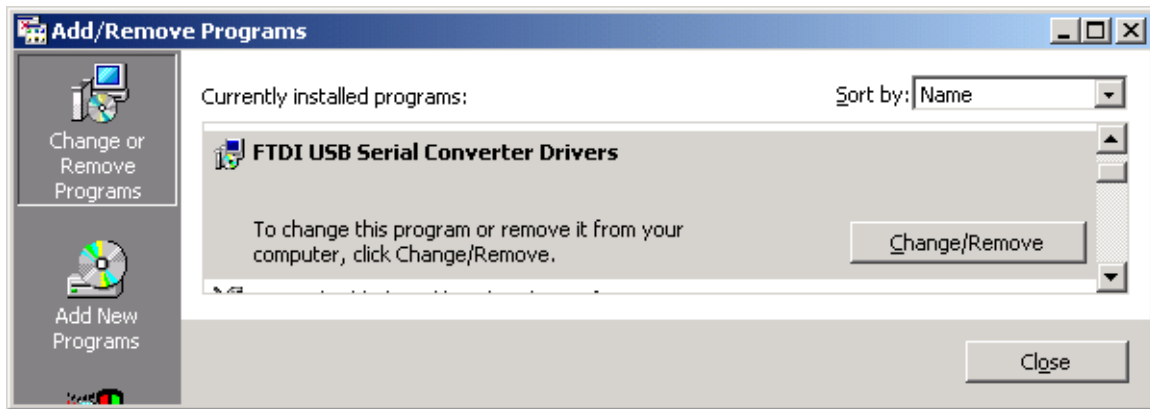


Screen 10

## Appendix A - Uninstalling

Under Windows 2000 this is a two stage process requiring the running of Add/Remove Software as well as Add/Remove Hardware.

Run Add/Remove Programs from the Control Panel



**Screen 11**

Select FTDI USB Serial Converter Drivers and then Change/Remove. This will bring up the FTDI Uninstaller screen which asks if it OK to delete the drivers.

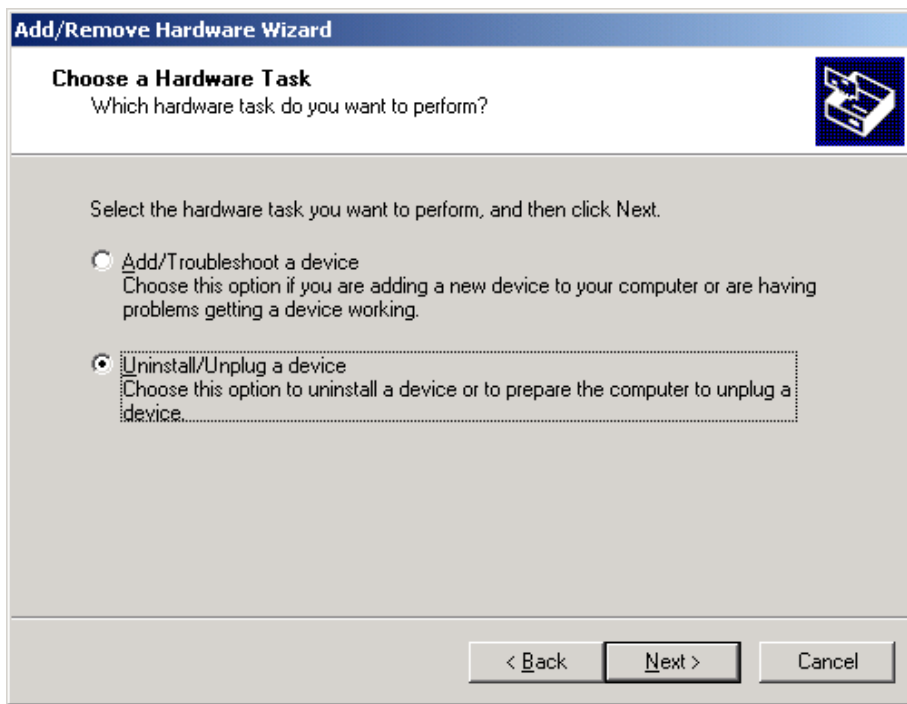
Select OK to Delete the drivers and the following should scroll across the uninstaller window. Select Finish to complete the driver uninstall.

The next stage involves removing the installed hardware. Run Add/Remove Hardware from the Control Panel.



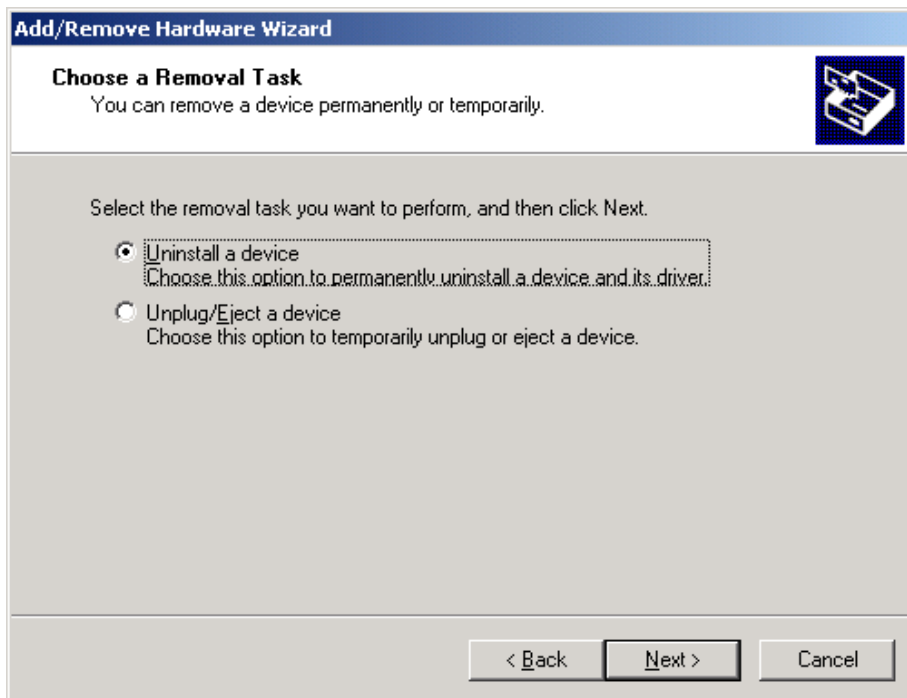
**Screen 12**

Select Next.



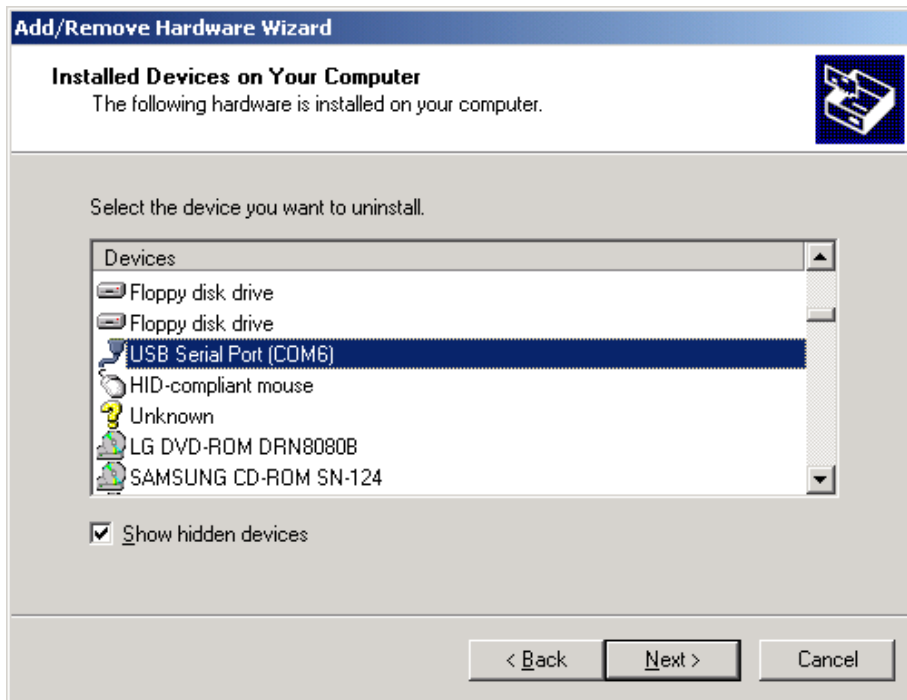
Screen 13

Check Uninstall/Unplug a device, then select Next.



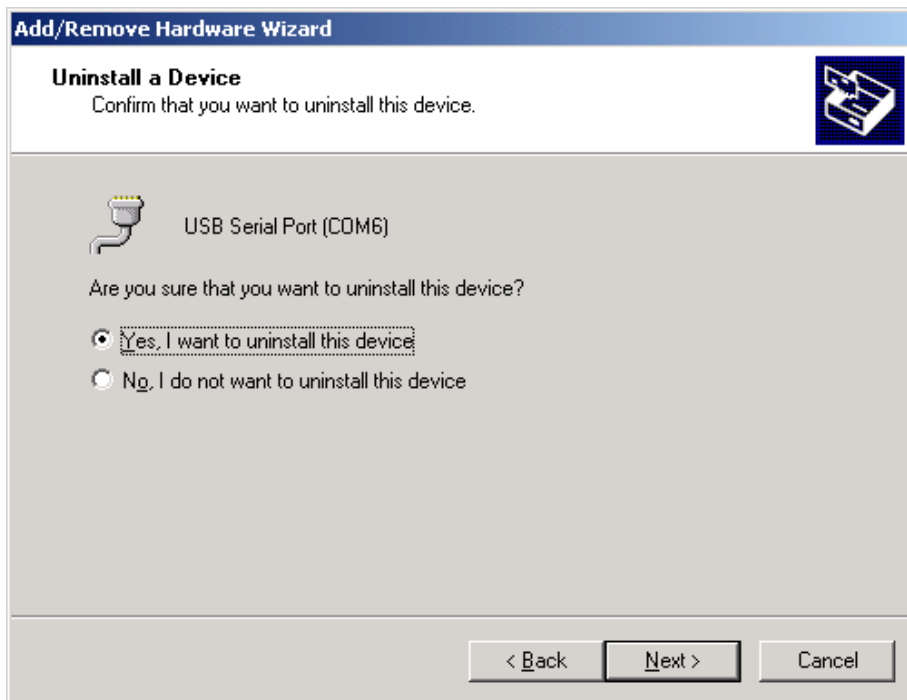
Screen 14

Check uninstall a device, then select Next.



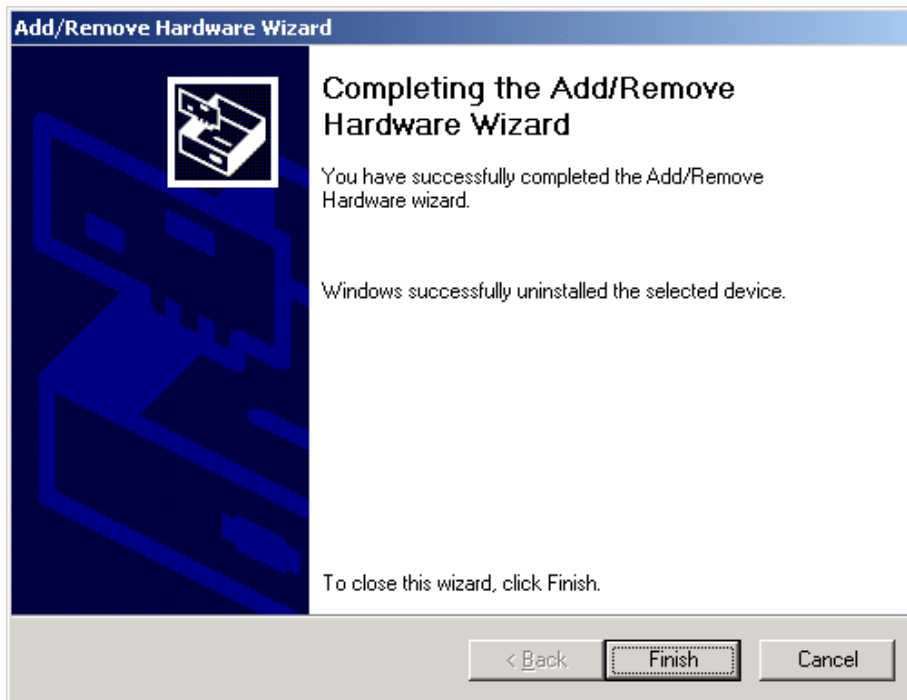
Screen 15

Check Show hidden devices, highlight USB Serial Port (COMx) and then select Next.



Screen 16

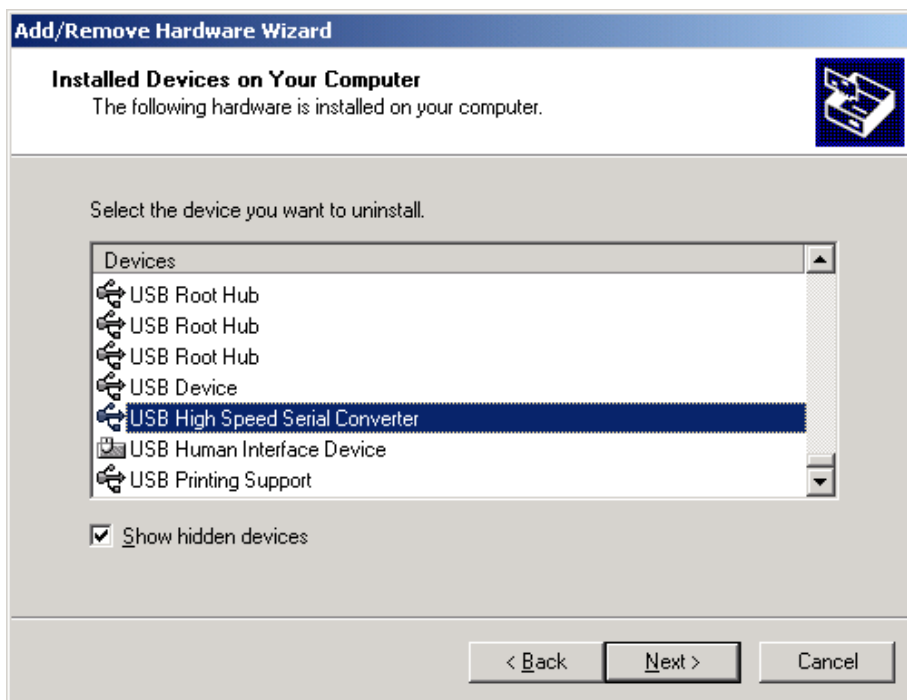
Check Yes, I want to uninstall the device and then select Next.



Screen 17

This removes the serial port and we now need to remove the USB to serial converter to complete the job.

Repeat the steps shown in screens 12 to 14, check Show hidden devices and then scroll down the screen until you find the USB High Speed Serial Converter. Highlight this and complete removal as before.



Screen 18